

Communities Scrutiny Commission Supplementary Information



Date: Thursday, 14 September 2023

Time: 5.00 pm

Venue: The Bordeaux Room - City Hall, College Green,
Bristol, BS1 5TR

Agenda item 9 – Parks and Green Space Strategy – updated maps

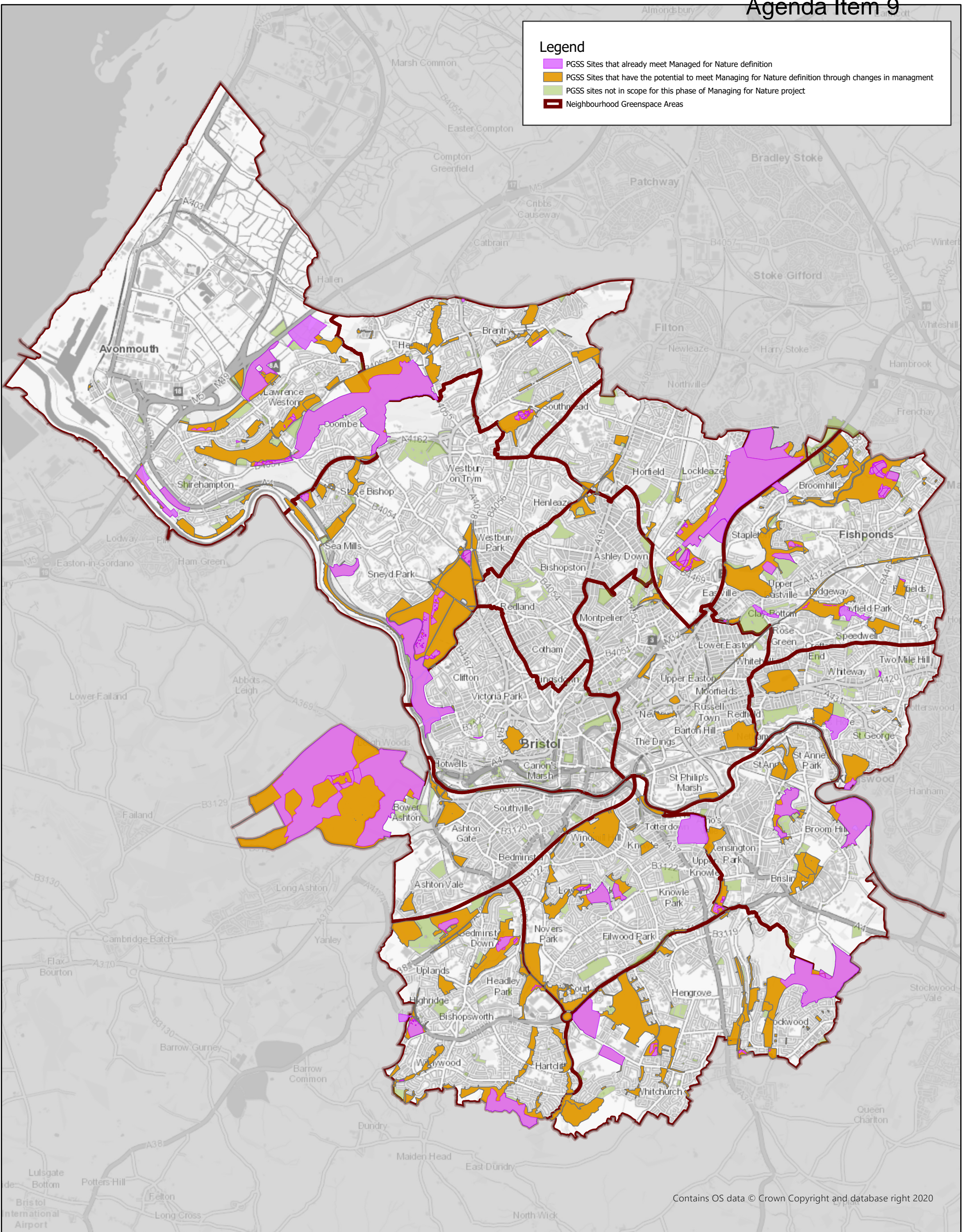
Updated maps are enclosed as follows:

Parks and Green Space Strategy – Managing for Nature – updated maps (citywide and footprint detail)



Legend

- PGSS Sites that already meet Managed for Nature definition
- PGSS Sites that have the potential to meet Managing for Nature definition through changes in management
- PGSS sites not in scope for this phase of Managing for Nature project
- Neighbourhood Greenspace Areas



Contains OS data © Crown Copyright and database right 2020

Bristol City Council DRAFT PLAN

Bristol Parks and Green Space Strategy

PGSS Sites Managed for Nature with potential for change.

The provision of information by Bristol City Council does not imply a right to reproduce or commercially exploit such information without the Council's express prior written permission. Reproduction or commercial exploitation of information provided by the Council without its express permission may be an infringement of copyright.

The council is unable to grant permission to reproduce or re-use material that is the property of a third party. Permission to reproduce or re-use such material must be obtained from the copyright holders.

Page 2



© Crown Copyright and database right 2023.
Ordnance Survey 100023406.

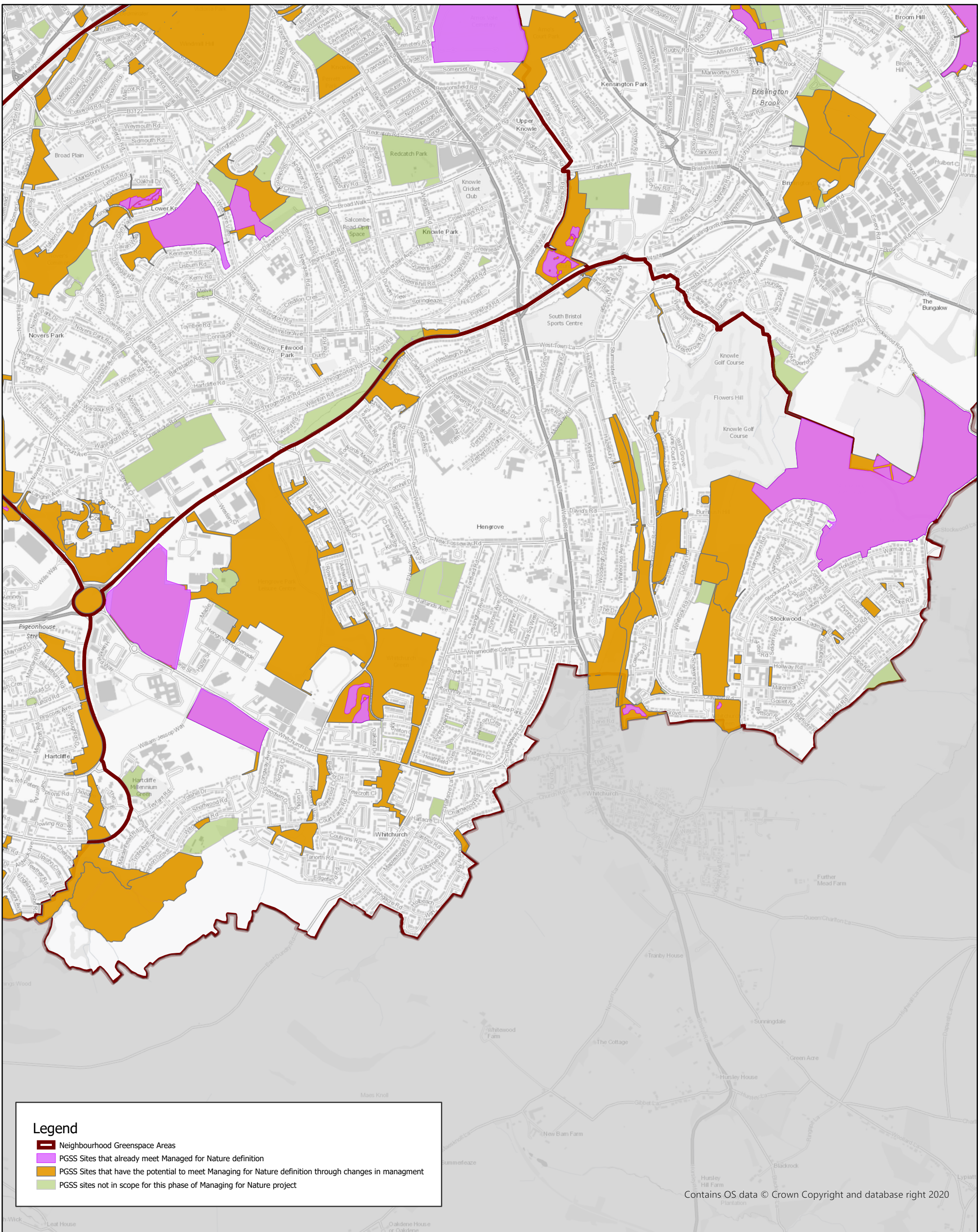
PARKS & GREEN SPACES

Scale: 1:54,779 @A4
Date: 11/09/2023



GROWTH & REGENERATION
DIRECTORATE
MANAGEMENT OF PLACE SERVICE

GIS & Asset Management Team,
Bristol Parks Service
Bower Ashton Depot, Kennel Lodge Rd, Bristol.
bristolparks@bristol.gov.uk
www.bristol.gov.uk/parks



Legend

- Neighbourhood Greenspace Areas
- PGSS Sites that already meet Managed for Nature definition
- PGSS Sites that have the potential to meet Managing for Nature definition through changes in management
- PGSS sites not in scope for this phase of Managing for Nature project

Contains OS data © Crown Copyright and database right 2020


Bristol City Council DRAFT PLAN

Bristol Parks and Green Space Strategy

PGSS Sites Managed for Nature with potential for change.

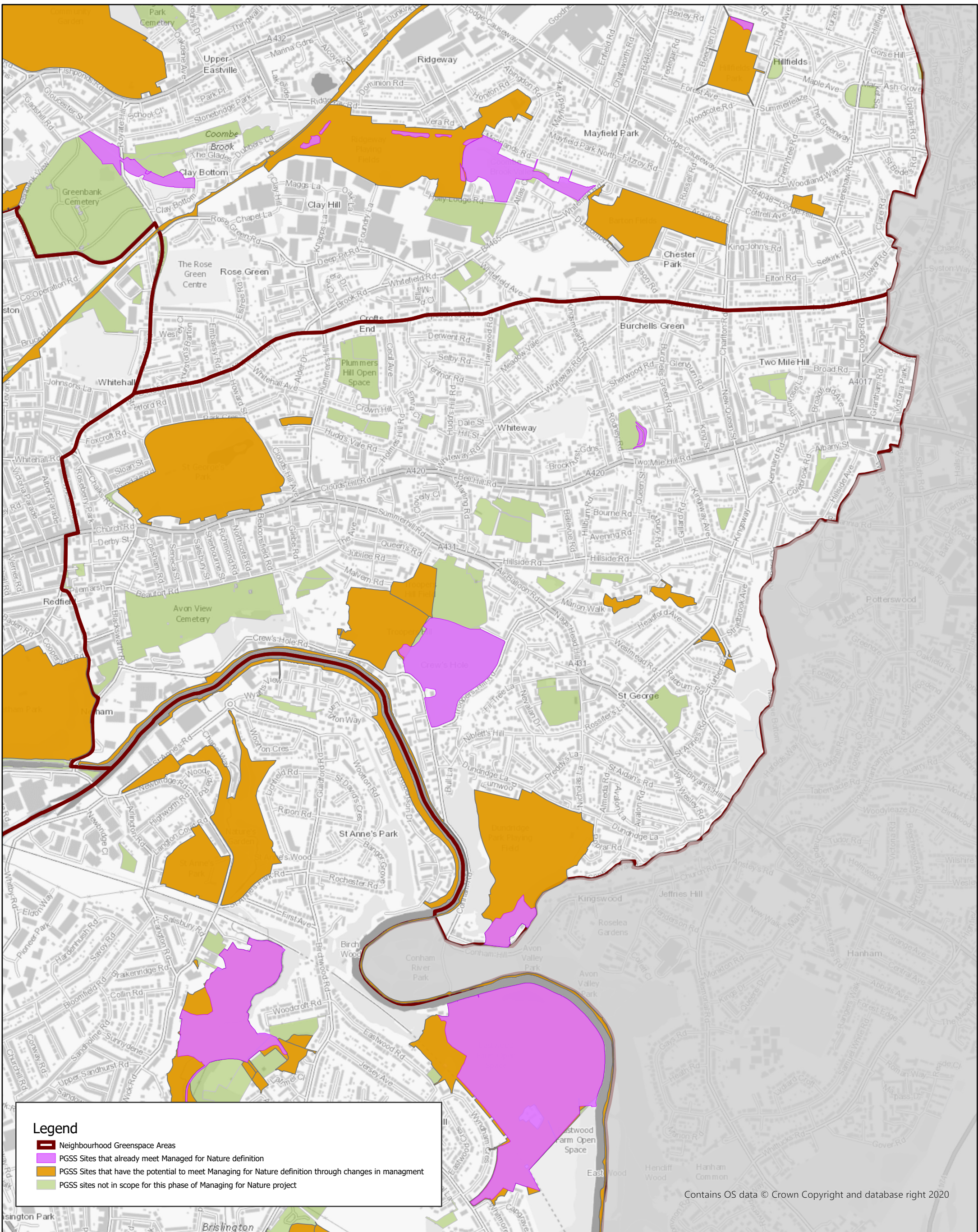
The provision of information by Bristol City Council does not imply a right to reproduce or commercially exploit such information without the Council's express prior written permission. Reproduction or commercial exploitation of information provided by the Council without its express permission may be an infringement of copyright.

The council is unable to grant permission to reproduce or re-use material that is the property of a third party. Permission to reproduce or re-use such material must be obtained from the copyright holders.

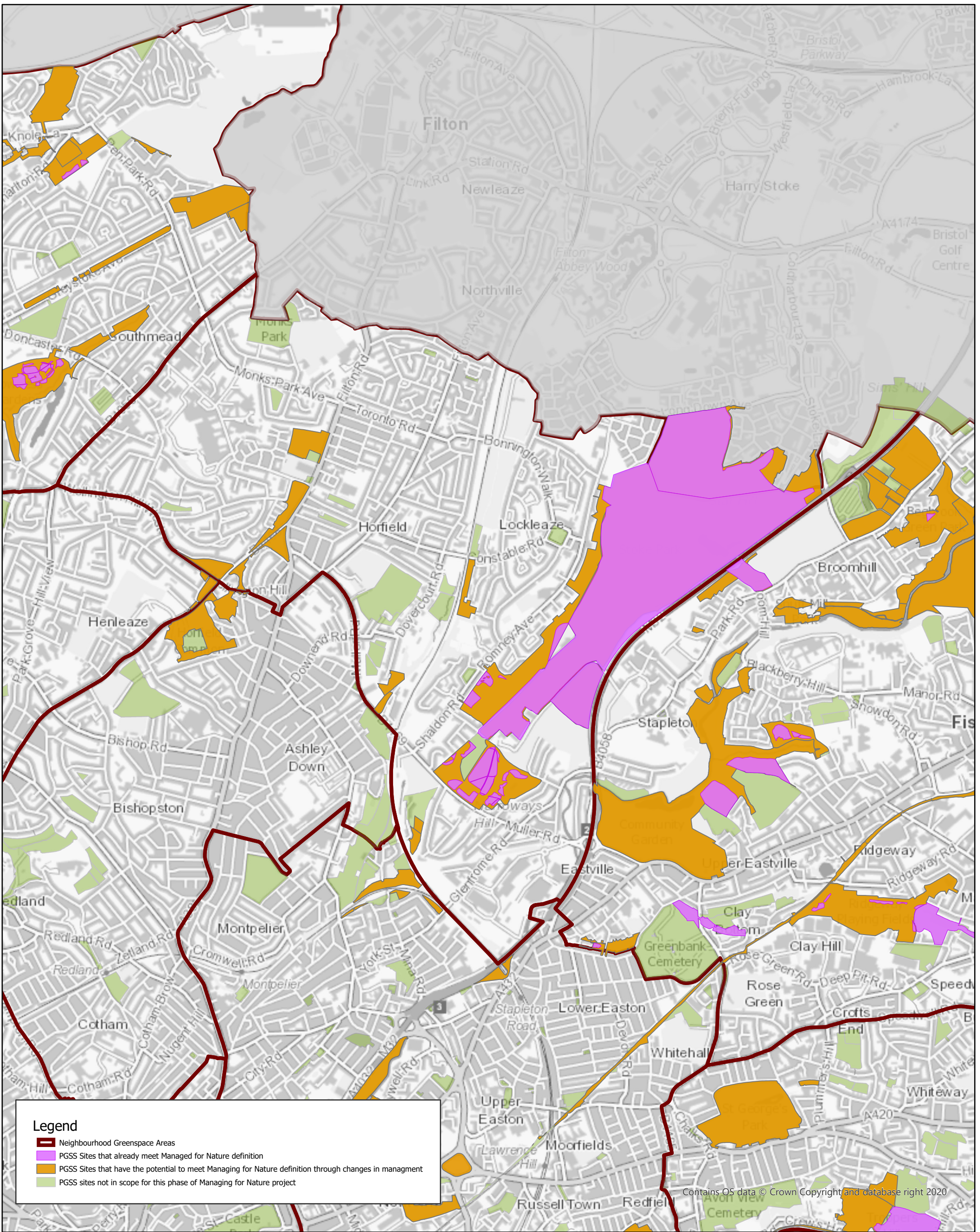

 © Crown Copyright and database right 2023.
 Ordnance Survey 100023406.
PARKS & GREEN SPACES

Scale: 1:17,000 @A4
 Date: 11/09/2023


GROWTH & REGENERATION DIRECTORATE
MANAGEMENT OF PLACE SERVICE
 GIS & Asset Management Team,
 Bristol Parks Service
 Bower Ashton Depot, Kennel Lodge Rd, Bristol.
 bristolparks@bristol.gov.uk
 www.bristol.gov.uk/parks



Contains OS data © Crown Copyright and database right 2020



Legend

- Neighbourhood Greenspace Areas
- PGSS Sites that already meet Managed for Nature definition
- PGSS Sites that have the potential to meet Managing for Nature definition through changes in management
- PGSS sites not in scope for this phase of Managing for Nature project

Bristol City Council DRAFT PLAN

Bristol Parks and Green Space Strategy

PGSS Sites Managed for Nature with potential for change.

The provision of information by Bristol City Council does not imply a right to reproduce or commercially exploit such information without the Council's express prior written permission. Reproduction or commercial exploitation of information provided by the Council without its express permission may be an infringement of copyright.

The council is unable to grant permission to reproduce or re-use any material that is the property of a third party. Permission to reproduce or re-use such material must be obtained from the copyright holders.

© Crown Copyright and database right 2023.
Ordnance Survey 100023406.

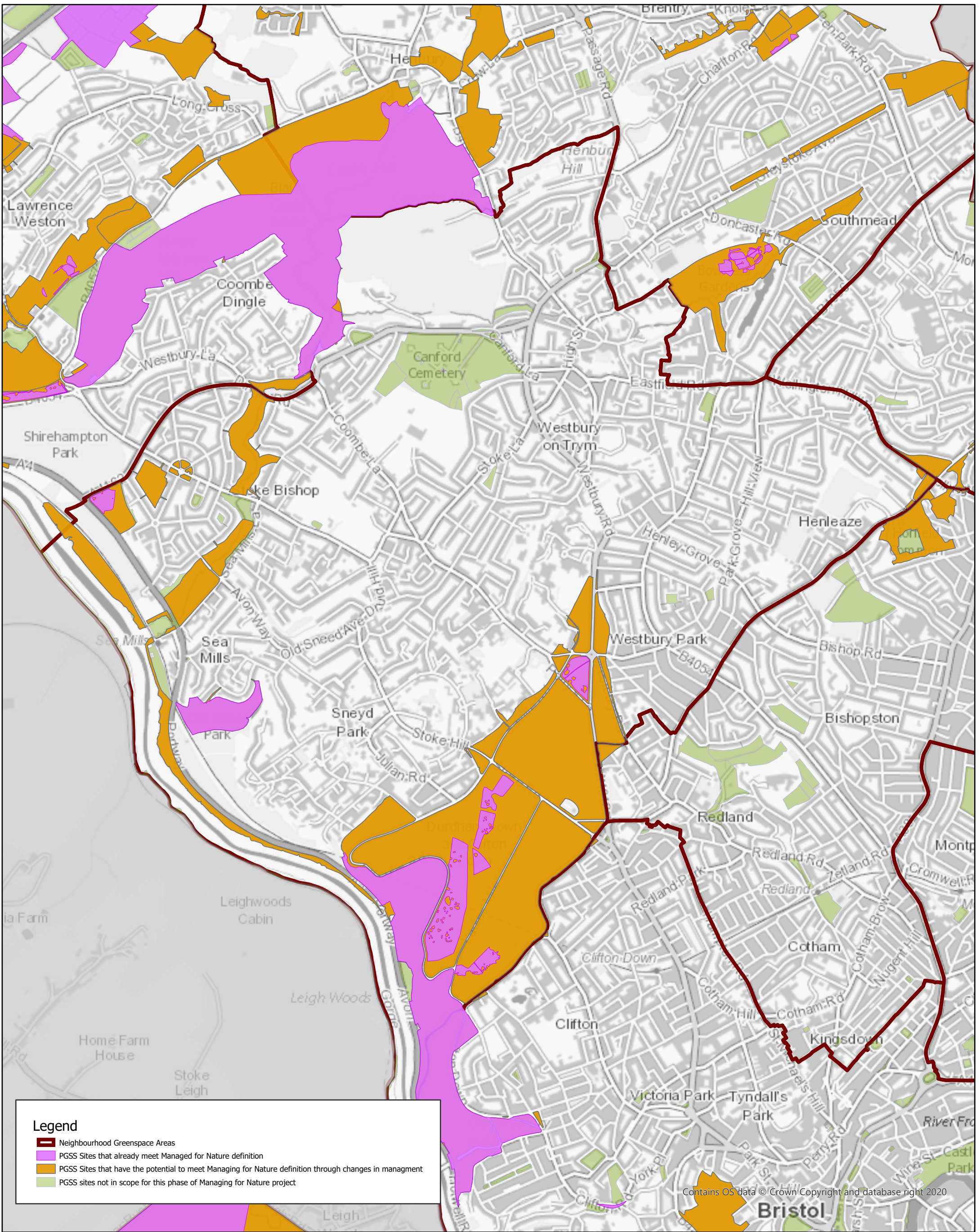
PARKS & GREEN SPACES

Scale: 1:19,000 @A4
Date: 11/09/2023



GROWTH & REGENERATION
DIRECTORATE
MANAGEMENT OF PLACE SERVICE

GIS & Asset Management Team,
Bristol Parks Service
Bower Ashton Depot, Kennel Lodge Rd, Bristol.
bristolparks@bristol.gov.uk
www.bristol.gov.uk/parks



Legend

- Neighbourhood Greenspace Areas
- PGSS Sites that already meet Managed for Nature definition
- PGSS Sites that have the potential to meet Managing for Nature definition through changes in management
- PGSS sites not in scope for this phase of Managing for Nature project

Contains OS data © Crown Copyright and database right 2020

Bristol City Council DRAFT PLAN

Bristol Parks and Green Space Strategy

PGSS Sites Managed for Nature with potential for change.

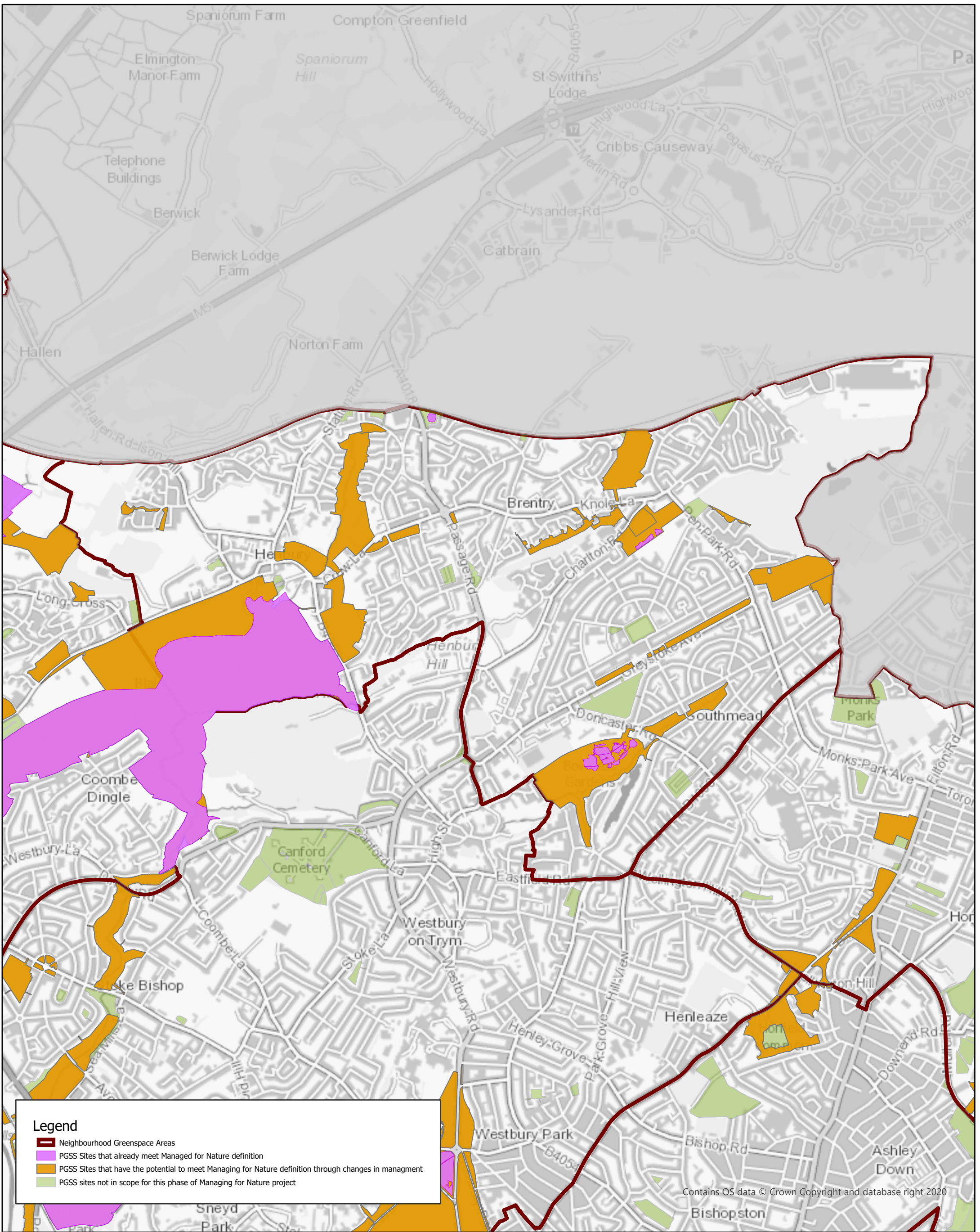
The provision of information by Bristol City Council does not imply a right to reproduce or commercially exploit such information without the Council's express prior written permission. Reproduction or commercial exploitation of information provided by the Council without its express permission may be an infringement of copyright.

The council is unable to grant permission to reproduce or re-use material that is the property of a third party. Permission to reproduce or re-use such material must be obtained from the copyright holders.


 © Crown Copyright and database right 2023.
 Ordnance Survey 100023406.
PARKS & GREEN SPACES

Scale: 1:18,000 @A4
 Date: 11/09/2023


 GROWTH & REGENERATION
 DIRECTORATE
 MANAGEMENT OF PLACE SERVICE
 GIS & Asset Management Team,
 Bristol Parks Service
 Bower Ashton Depot, Kennel Lodge Rd, Bristol.
 bristolparks@bristol.gov.uk
 www.bristol.gov.uk/parks



Legend

- Neighbourhood Greenspace Areas
- PGSS Sites that already meet Managed for Nature definition
- PGSS Sites that have the potential to meet Managing for Nature definition through changes in management
- PGSS sites not in scope for this phase of Managing for Nature project


Bristol City Council DRAFT PLAN

Bristol Parks and Green Space Strategy

PGSS Sites Managed for Nature with potential for change.

The provision of information by Bristol City Council does not imply a right to reproduce or commercially exploit such information without the Council's express prior written permission. Reproduction or commercial exploitation of information provided by the Council without its express permission may be an infringement of copyright.

The council is unable to grant permission to reproduce or re-use any material that is the property of other parties. Permission to reproduce or re-use such material must be obtained from the copyright holders.

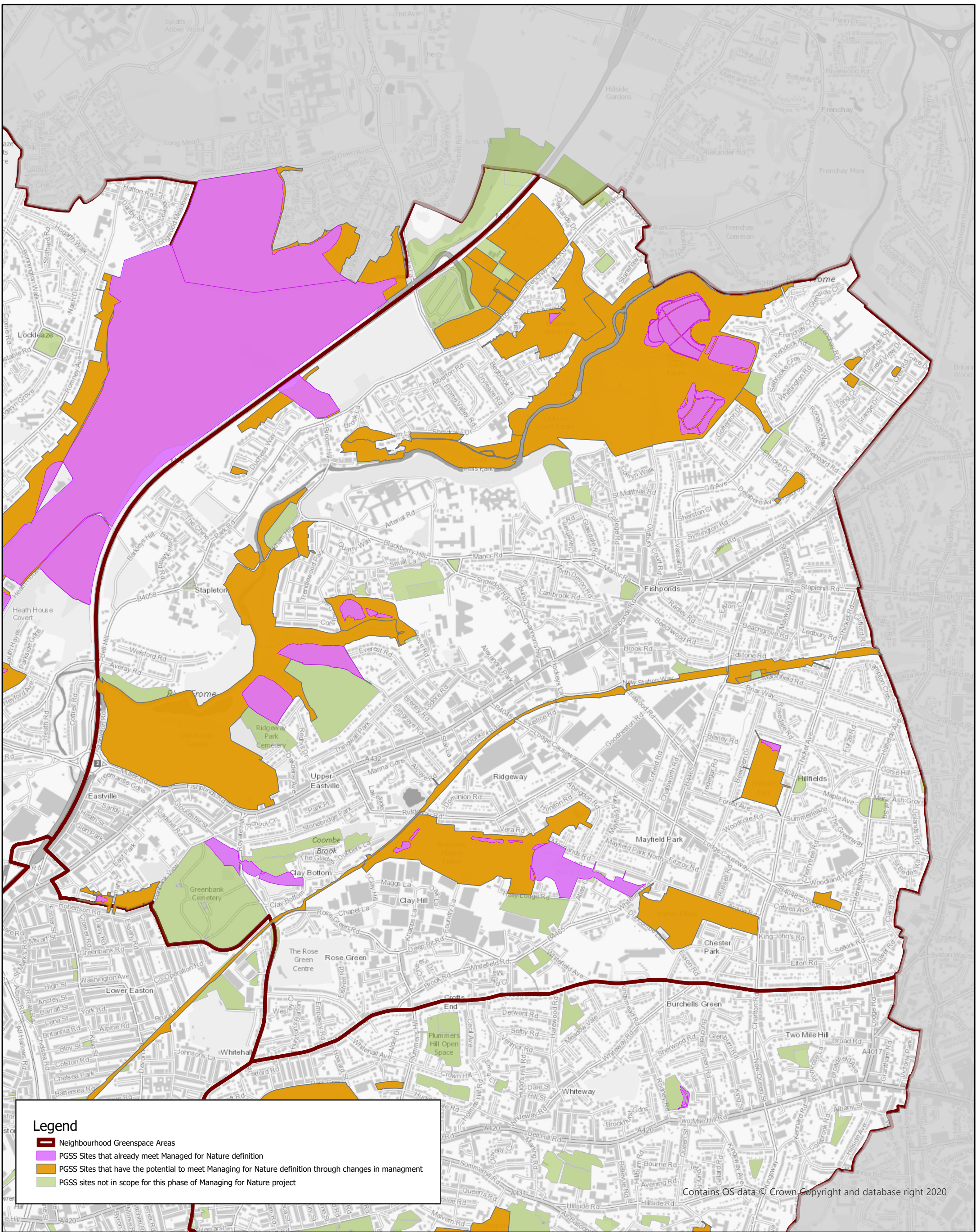

 © Crown Copyright and database right 2023.
 Ordnance Survey 100023406.

PARKS & GREEN SPACES

Scale: 1:18,000 @A4
Date: 11/09/2023


 GROWTH & REGENERATION
 DIRECTORATE
 MANAGEMENT OF PLACE SERVICE

GIS & Asset Management Team,
 Bristol Parks Service
 Bower Ashton Depot, Kennel Lodge Rd, Bristol.
 bristolparks@bristol.gov.uk
 www.bristol.gov.uk/parks



Legend

- ▬ Neighbourhood Greenspace Areas
- PGSS Sites that already meet Managed for Nature definition
- PGSS Sites that have the potential to meet Managing for Nature definition through changes in management
- PGSS sites not in scope for this phase of Managing for Nature project

Contains OS data © Crown Copyright and database right 2020

Bristol City Council DRAFT PLAN

Bristol Parks and Green Space Strategy

PGSS Sites Managed for Nature with potential for change.

The provision of information by Bristol City Council does not imply a right to reproduce or commercially exploit such information without the Council's express prior written permission. Reproduction or commercial exploitation of information provided by the Council without its express permission may be an infringement of copyright.

The council is unable to grant permission to reproduce or re-use material that is the property of a third party. Permission to reproduce or re-use such material must be obtained from the copyright holders.



© Crown Copyright and database right 2023.
Ordnance Survey 100023406.

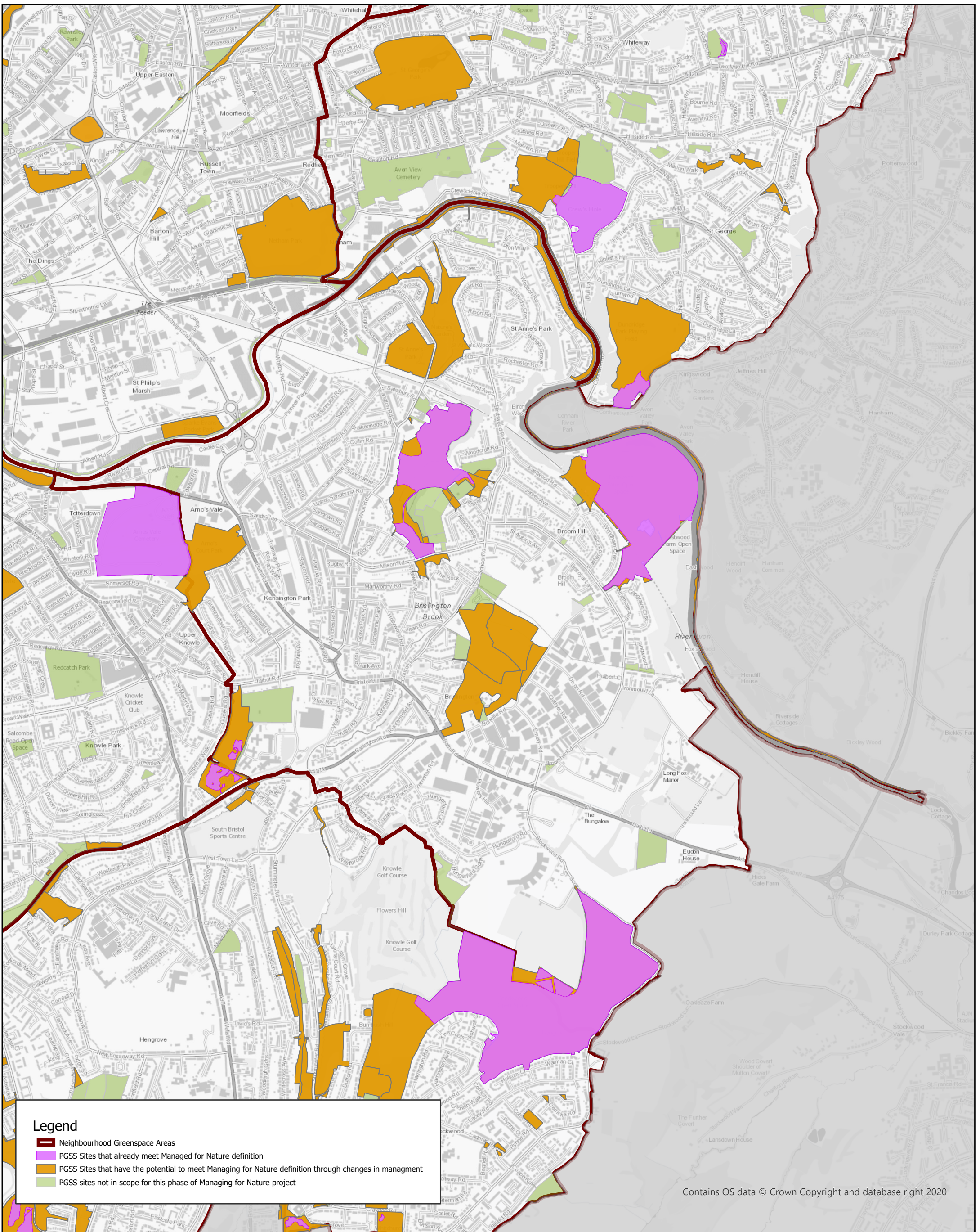
PARKS & GREEN SPACES

Scale: 1:14,000 @A4
Date: 11/09/2023



GROWTH & REGENERATION
DIRECTORATE
MANAGEMENT OF PLACE SERVICE

GIS & Asset Management Team,
Bristol Parks Service
Bower Ashton Depot, Kennel Lodge Rd, Bristol.
bristolparks@bristol.gov.uk
www.bristol.gov.uk/parks



Legend

- Neighbourhood Greenspace Areas
- PGSS Sites that already meet Managed for Nature definition
- PGSS Sites that have the potential to meet Managing for Nature definition through changes in management
- PGSS sites not in scope for this phase of Managing for Nature project

Contains OS data © Crown Copyright and database right 2020


Bristol City Council DRAFT PLAN

Bristol Parks and Green Space Strategy

PGSS Sites Managed for Nature with potential for change.

The provision of information by Bristol City Council does not imply a right to reproduce or commercially exploit such information without the Council's express prior written permission. Reproduction or commercial exploitation of information provided by the Council without its express permission may be an infringement of copyright.

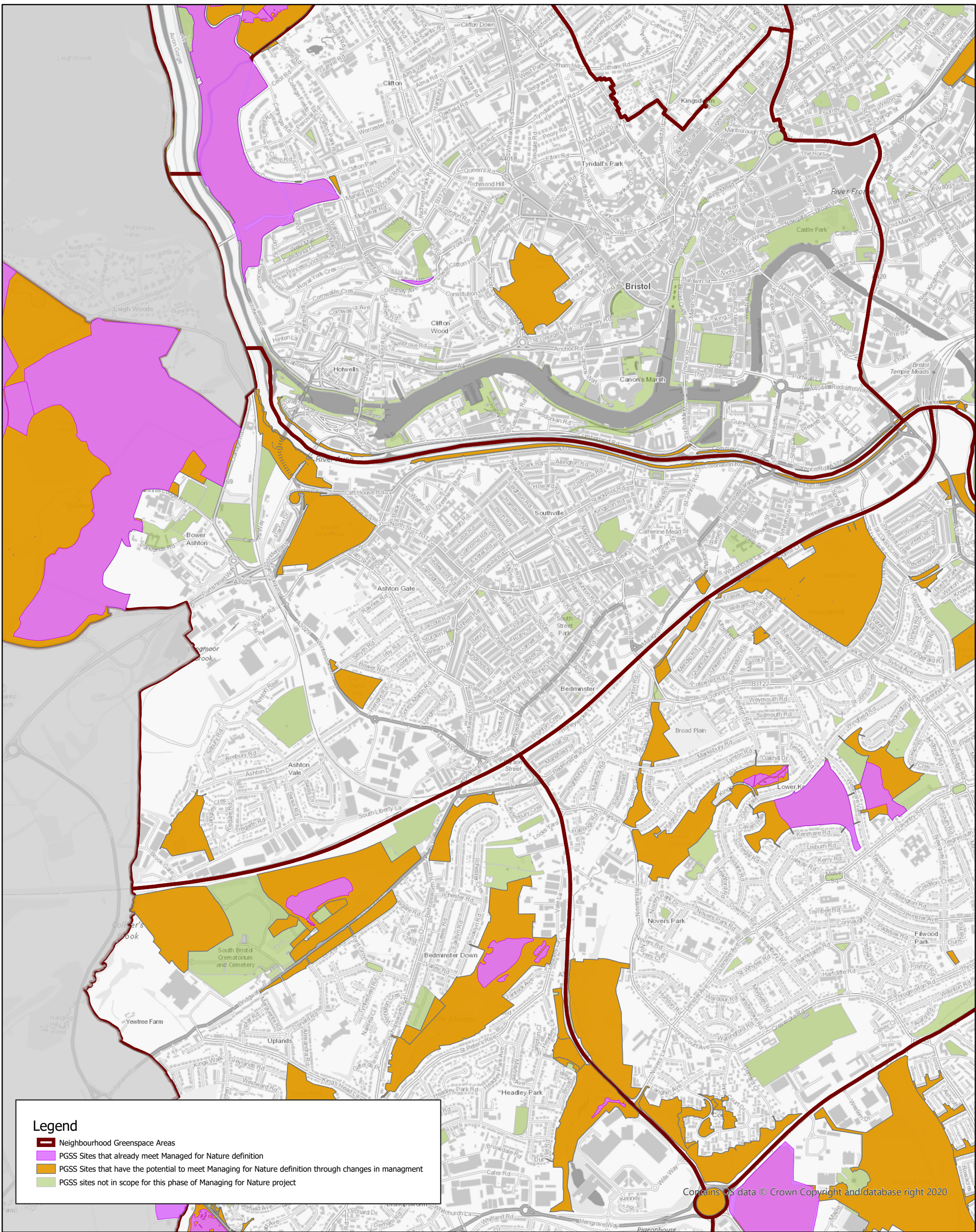
The council is unable to grant permission to reproduce or re-use material that is the property of a third party. Permission to reproduce or re-use such material must be obtained from the copyright holders.


 © Crown Copyright and database right 2023.
 Ordnance Survey 100023406.
PARKS & GREEN SPACES

Scale: 1:17,000 @A4
 Date: 11/09/2023


**GROWTH & REGENERATION
 DIRECTORATE
 MANAGEMENT OF PLACE SERVICE**

GIS & Asset Management Team,
 Bristol Parks Service
 Bower Ashton Depot, Kennel Lodge Rd, Bristol.
 bristolparks@bristol.gov.uk
 www.bristol.gov.uk/parks



Legend

- Neighbourhood Greenspace Areas
- PGSS Sites that already meet Managed for Nature definition
- PGSS Sites that have the potential to meet Managing for Nature definition through changes in management
- PGSS sites not in scope for this phase of Managing for Nature project

Contains OS data © Crown Copyright and database right 2020

Bristol City Council DRAFT PLAN


Bristol Parks and Green Space Strategy

PGSS Sites Managed for Nature with potential for change.

The provision of information by Bristol City Council does not imply a right to reproduce or commercially exploit such information without the Council's express prior written permission. Reproduction or commercial exploitation of information provided by the Council without its express permission may be an infringement of copyright.

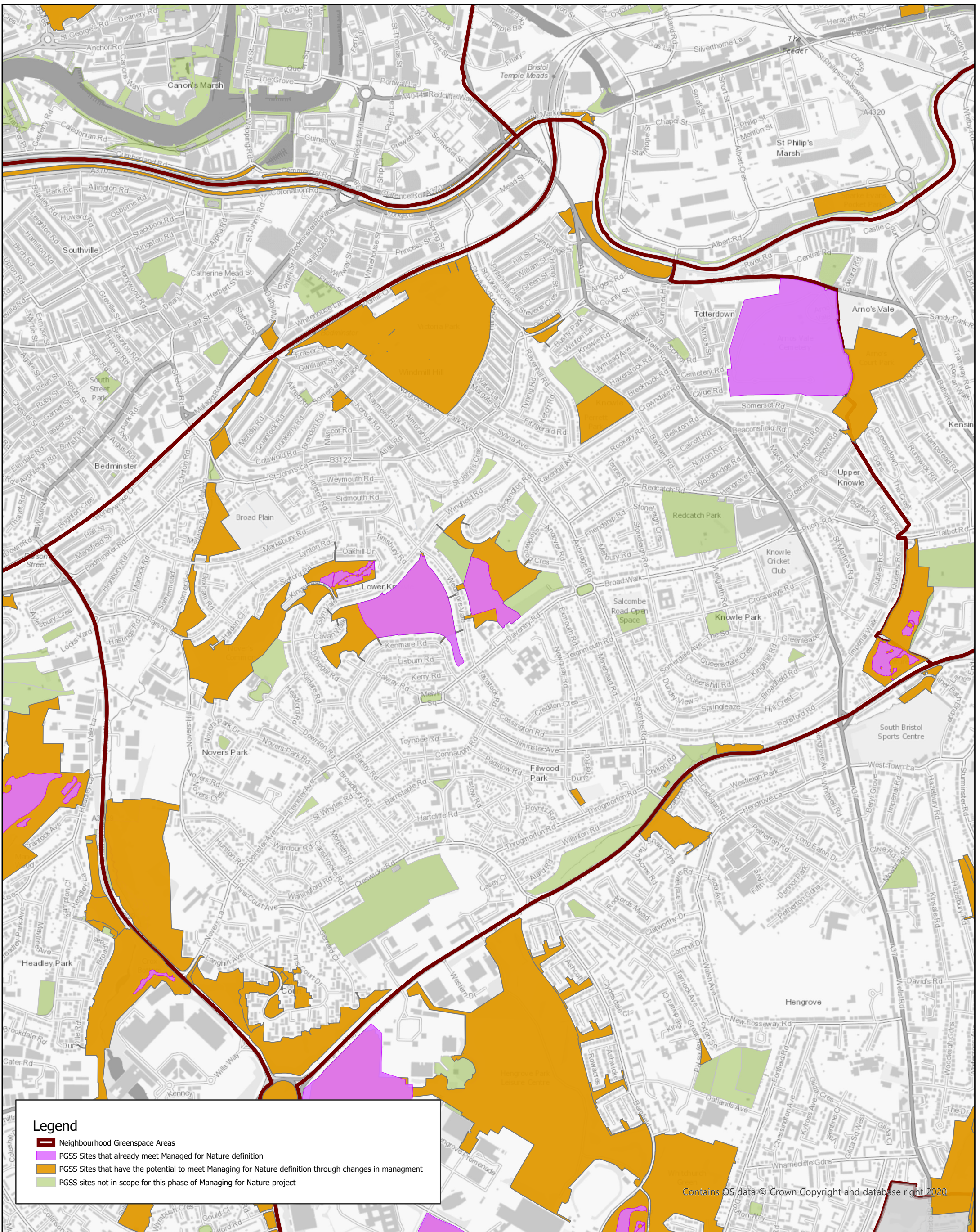
The council is unable to grant permission to reproduce or re-use any material that is the property of a third party. Permission to reproduce or re-use such material must be obtained from the copyright holders.

Page 10


 © Crown Copyright and database right 2023.
 Ordnance Survey 100023406.
PARKS & GREEN SPACES

Scale: 1:16,000 @A4
Date: 11/09/2023


 GROWTH & REGENERATION
 DIRECTORATE
 MANAGEMENT OF PLACE SERVICE
 GIS & Asset Management Team,
 Bristol Parks Service
 Bower Ashton Depot, Kennel Lodge Rd, Bristol.
 bristolparks@bristol.gov.uk
 www.bristol.gov.uk/parks



- Legend**
- Neighbourhood Greenspace Areas
 - PGSS Sites that already meet Managed for Nature definition
 - PGSS Sites that have the potential to meet Managing for Nature definition through changes in management
 - PGSS sites not in scope for this phase of Managing for Nature project

Contains OS data © Crown Copyright and database right 2020

Bristol City Council DRAFT PLAN
Bristol Parks and Green Space Strategy
PGSS Sites Managed for Nature with potential for change.

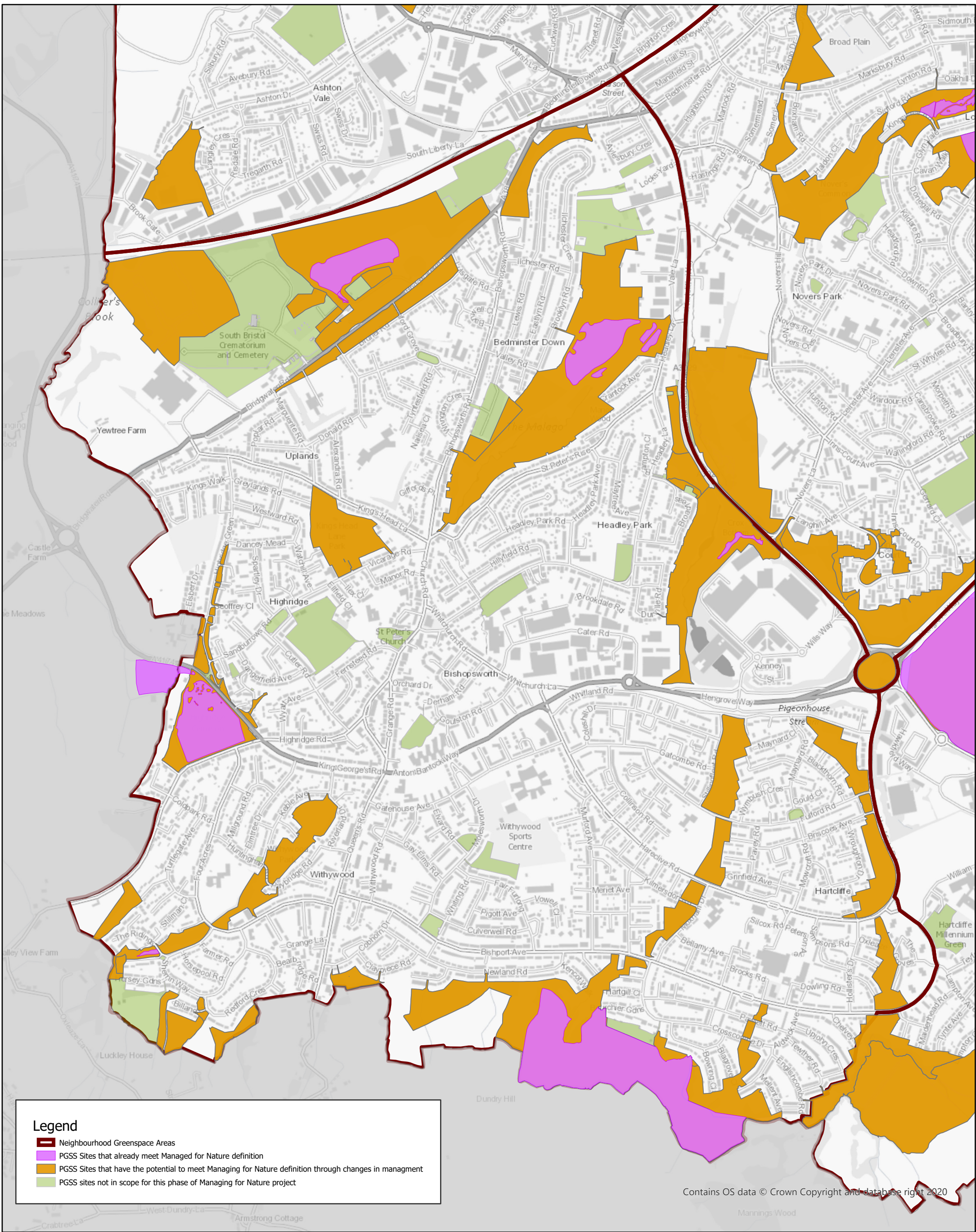
The provision of information by Bristol City Council does not imply a right to reproduce or commercially exploit such information without the Council's express prior written permission. Reproduction or commercial exploitation of information provided by the Council without its express permission may be an infringement of copyright.

The council is unable to grant permission to reproduce or re-use any material that is the property of a third party. Permission to reproduce or re-use such material must be obtained from the copyright holders.


 © Crown Copyright and database right 2023.
 Ordnance Survey 100023406.
PARKS & GREEN SPACES

Scale: 1:13,000 @A4
 Date: 11/09/2023


 GROWTH & REGENERATION
 DIRECTORATE
 MANAGEMENT OF PLACE SERVICE
 GIS & Asset Management Team,
 Bristol Parks Service
 Bower Ashton Depot, Kennel Lodge Rd, Bristol.
 bristolparks@bristol.gov.uk
 www.bristol.gov.uk/parks



Legend

- ▬ Neighbourhood Greenspace Areas
- PGSS Sites that already meet Managed for Nature definition
- PGSS Sites that have the potential to meet Managing for Nature definition through changes in management
- PGSS sites not in scope for this phase of Managing for Nature project

Contains OS data © Crown Copyright and database right 2020

Bristol City Council DRAFT PLAN

Bristol Parks and Green Space Strategy

PGSS Sites Managed for Nature with potential for change.

The provision of information by Bristol City Council does not imply a right to reproduce or commercially exploit such information without the Council's express prior written permission. Reproduction or commercial exploitation of information provided by the Council without its express permission may be an infringement of copyright.

The council is unable to grant permission to reproduce or re-use any material that is the property of a third party. Permission to reproduce or re-use such material must be obtained from the copyright holders.



© Crown Copyright and database right 2023.
Ordnance Survey 100023406.

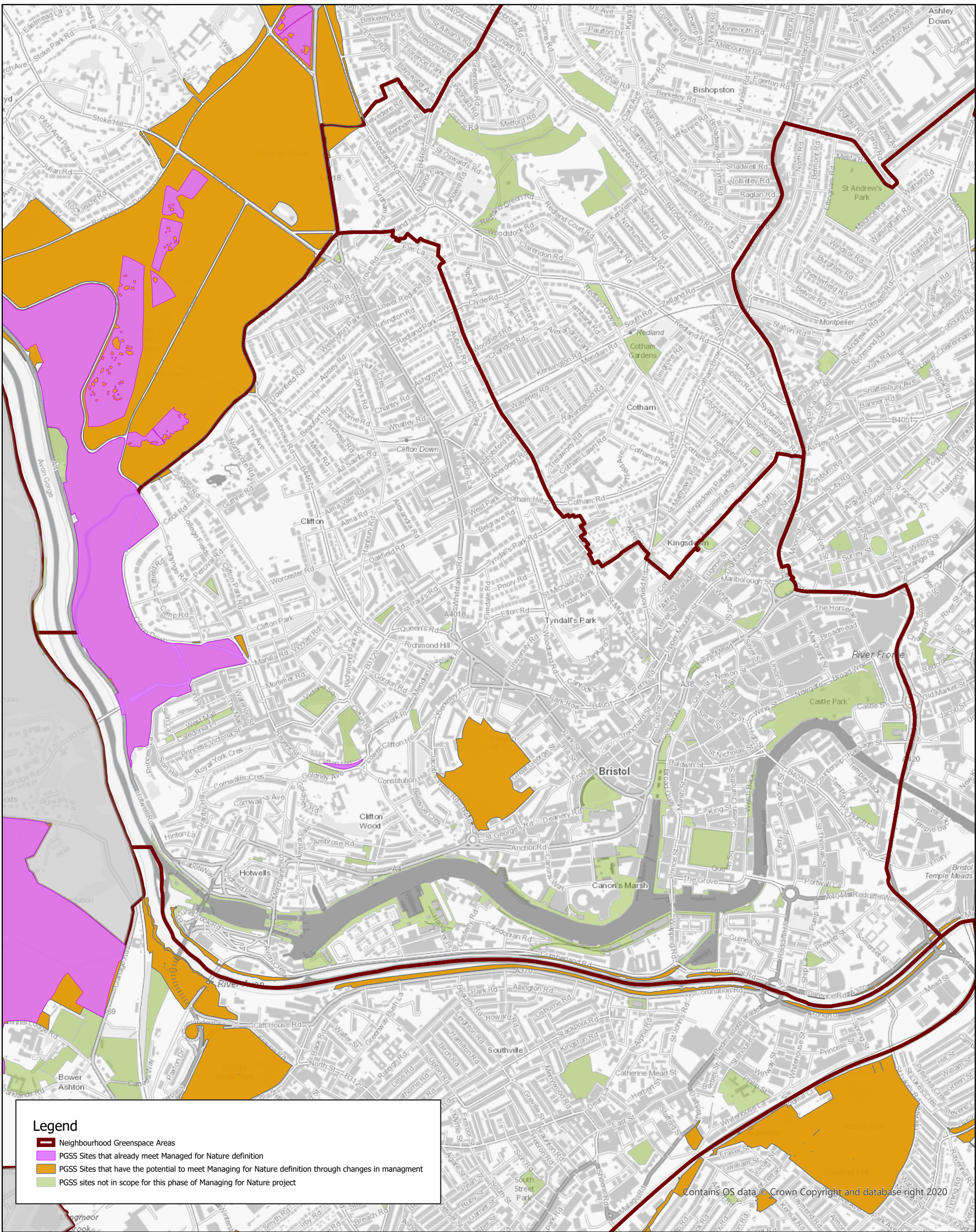
PARKS & GREEN SPACES

Scale: 1:12,000 @A4
Date: 11/09/2023



GROWTH & REGENERATION
DIRECTORATE
MANAGEMENT OF PLACE SERVICE

GIS & Asset Management Team,
Bristol Parks Service
Bower Ashton Depot, Kennel Lodge Rd, Bristol.
bristolparks@bristol.gov.uk
www.bristol.gov.uk/parks



Legend

- ▬ Neighbourhood Greenspace Areas
- PGSS Sites that already meet Managed for Nature definition
- PGSS Sites that have the potential to meet Managing for Nature definition through changes in management
- PGSS sites not in scope for this phase of Managing for Nature project

Contains OS data © Crown Copyright and database right 2020

Bristol City Council DRAFT PLAN

Bristol Parks and Green Space Strategy

PGSS Sites Managed for Nature with potential for change.

The provision of information by Bristol City Council does not imply a right to reproduce or commercially exploit such information without the Council's express prior written permission. Reproduction or commercial exploitation of information provided by the Council without its express permission may be an infringement of copyright.

The council is unable to grant permission to reproduce or re-use any material that is the property of a third party. Permission to reproduce or re-use such material must be obtained from the copyright holders.



© Crown Copyright and database right 2023.
Ordnance Survey 100023406.

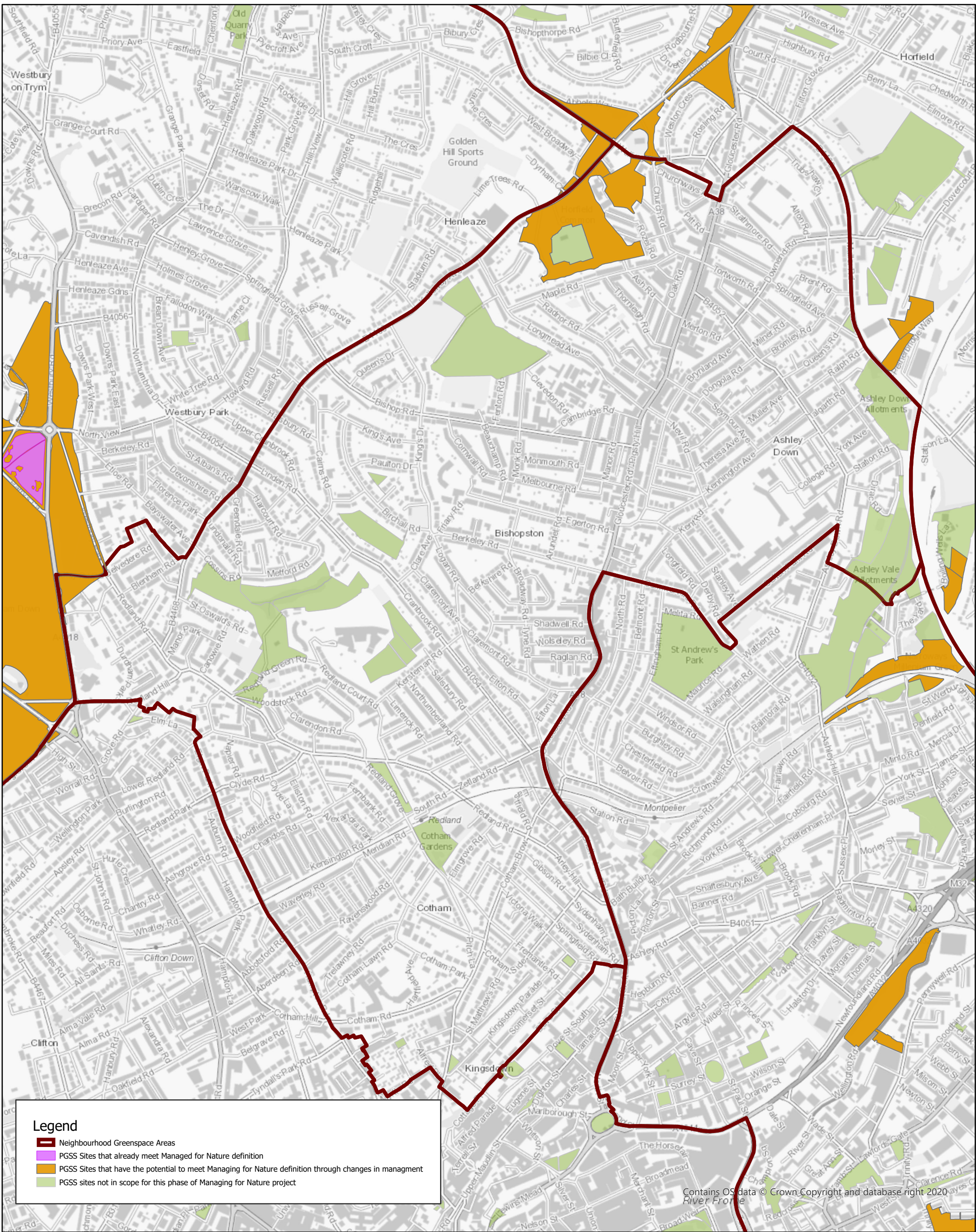
PARKS & GREEN SPACES

Scale: 1:13,000 @A4
Date: 11/09/2023



GROWTH & REGENERATION
DIRECTORATE
MANAGEMENT OF PLACE SERVICE

GIS & Asset Management Team,
Bristol Parks Service
Bower Ashton Depot, Kennel Lodge Rd, Bristol.
bristolparks@bristol.gov.uk
www.bristol.gov.uk/parks



Legend

- ▬ Neighbourhood Greenspace Areas
- PGSS Sites that already meet Managed for Nature definition
- PGSS Sites that have the potential to meet Managing for Nature definition through changes in management
- PGSS sites not in scope for this phase of Managing for Nature project

Contains OS data © Crown Copyright and database right 2020
River Front

Bristol City Council DRAFT PLAN
Bristol Parks and Green Space Strategy
PGSS Sites Managed for Nature with potential for change.

The provision of information by Bristol City Council does not imply a right to reproduce or commercially exploit such information without the Council's express prior written permission. Reproduction or commercial exploitation of information provided by the Council without its express permission may be an infringement of copyright.

The council is unable to grant permission to reproduce or re-use any material that is the property of a third party. Permission to reproduce or re-use such material must be obtained from the copyright holders.



© Crown Copyright and database right 2023.
Ordnance Survey 100023406.

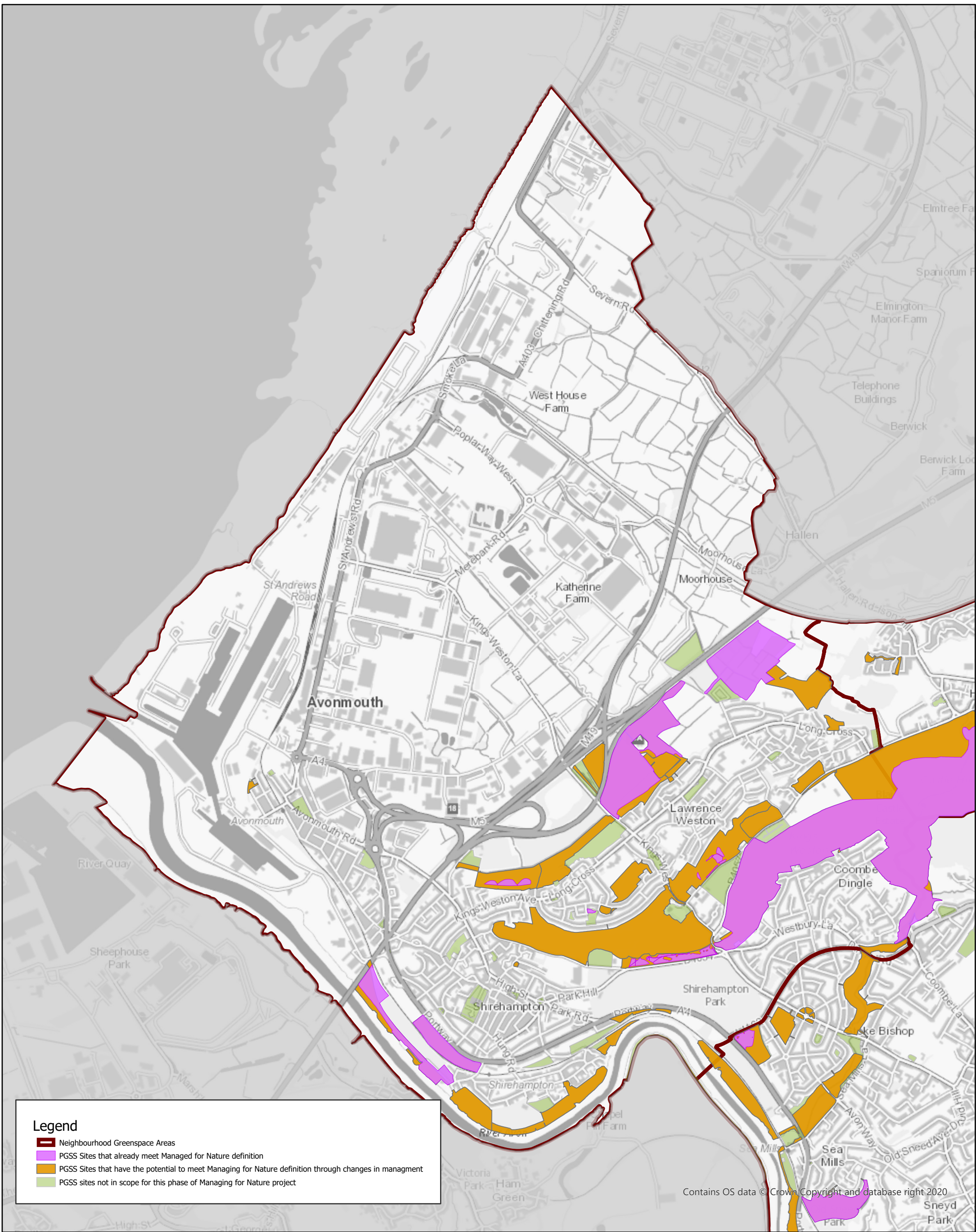
PARKS & GREEN SPACES

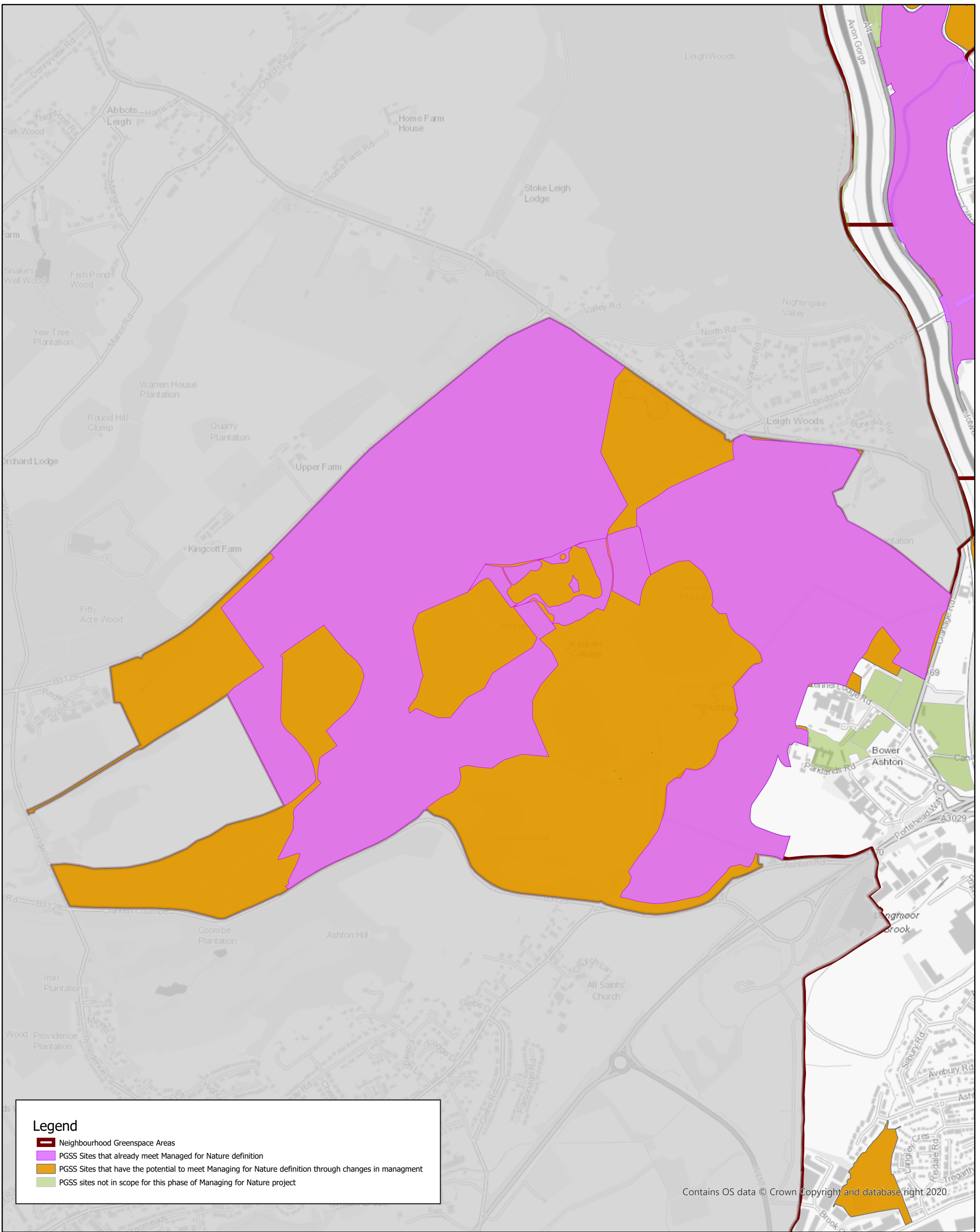
Scale: 1:11,000 @A4
Date: 11/09/2023



GROWTH & REGENERATION
DIRECTORATE
MANAGEMENT OF PLACE SERVICE

GIS & Asset Management Team,
Bristol Parks Service
Bower Ashton Depot, Kennel Lodge Rd, Bristol.
bristolparks@bristol.gov.uk
www.bristol.gov.uk/parks





Legend

- Neighbourhood Greenspace Areas
- PGSS Sites that already meet Managed for Nature definition
- PGSS Sites that have the potential to meet Managing for Nature definition through changes in management
- PGSS sites not in scope for this phase of Managing for Nature project

Contains OS data © Crown Copyright and database right 2020

Bristol City Council DRAFT PLAN

Bristol Parks and Green Space Strategy

PGSS Sites Managed for Nature with potential for change.

The provision of information by Bristol City Council does not imply a right to reproduce or commercially exploit such information without the Council's express prior written permission. Reproduction or commercial exploitation of information provided by the Council without its express permission may be an infringement of copyright.

The council is unable to grant permission to reproduce or re-use any material that is the property of a third party. Permission to reproduce or re-use such material must be obtained from the copyright holders.

Page 16



© Crown Copyright and database right 2023.
Ordnance Survey 100023406.

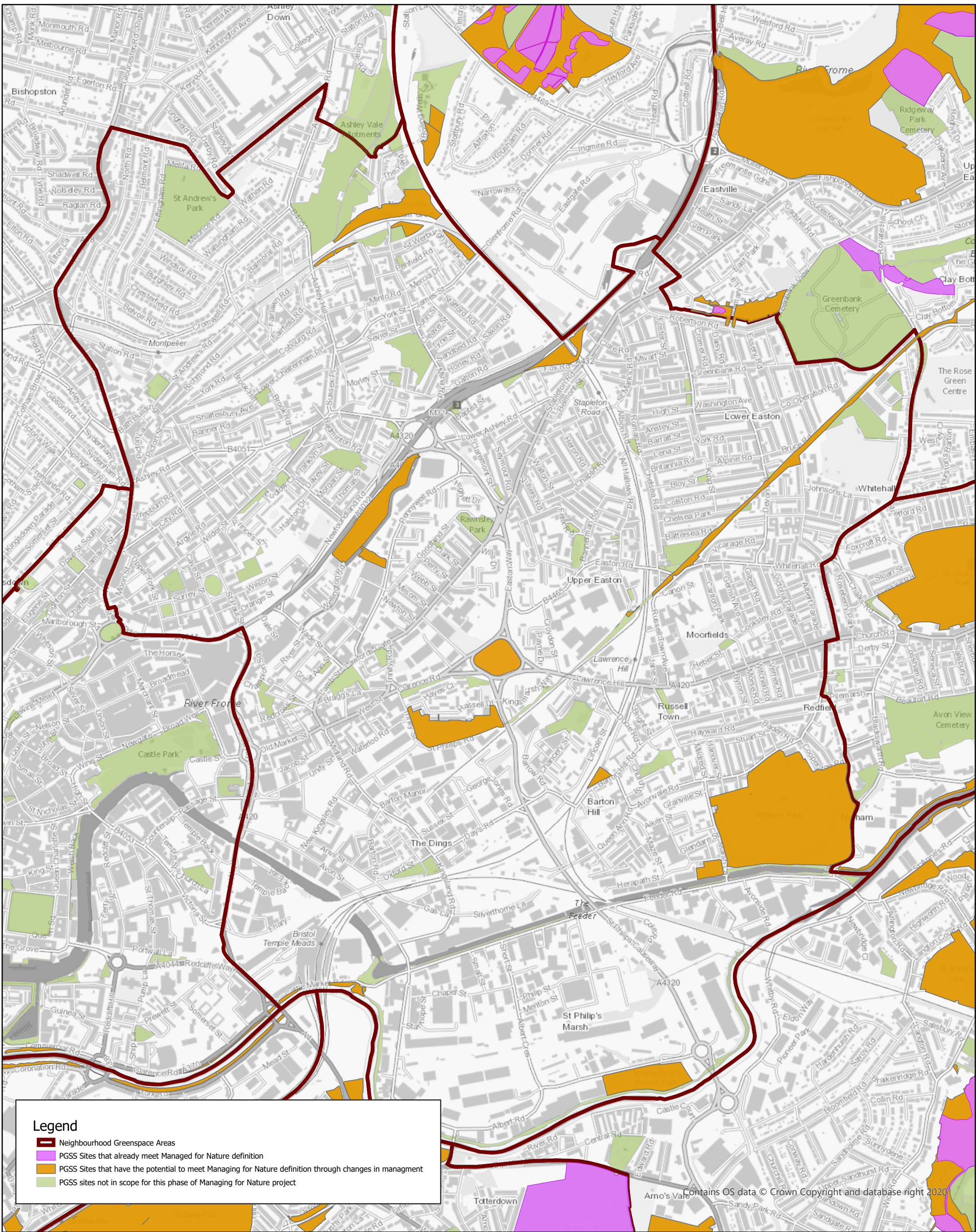
PARKS & GREEN SPACES

Scale: 1:11,000 @A4
Date: 11/09/2023



GROWTH & REGENERATION
DIRECTORATE
MANAGEMENT OF PLACE SERVICE

GIS & Asset Management Team,
Bristol Parks Service
Bower Ashton Depot, Kennel Lodge Rd, Bristol.
bristolparks@bristol.gov.uk
www.bristol.gov.uk/parks



Legend

- Neighbourhood Greenspace Areas
- PGSS Sites that already meet Managed for Nature definition
- PGSS Sites that have the potential to meet Managing for Nature definition through changes in management
- PGSS sites not in scope for this phase of Managing for Nature project

Contains OS data © Crown Copyright and database right 2020

Bristol City Council DRAFT PLAN
Bristol Parks and Green Space Strategy
PGSS Sites Managed for Nature with potential for change.

The provision of information by Bristol City Council does not imply a right to reproduce or commercially exploit such information without the Council's express prior written permission. Reproduction or commercial exploitation of information provided by the Council without its express permission may be an infringement of copyright.

The council is unable to grant permission to reproduce or re-use any material that is the property of a third party. Permission to reproduce or re-use such material must be obtained from the copyright holders.



© Crown Copyright and database right 2023.
 Ordnance Survey 100023406.

PARKS & GREEN SPACES

Scale: 1:12,000 @A4
 Date: 11/09/2023



GROWTH & REGENERATION
 DIRECTORATE
 MANAGEMENT OF PLACE SERVICE

GIS & Asset Management Team,
 Bristol Parks Service
 Bower Ashton Depot, Kennel Lodge Rd, Bristol.
 bristolparks@bristol.gov.uk
 www.bristol.gov.uk/parks